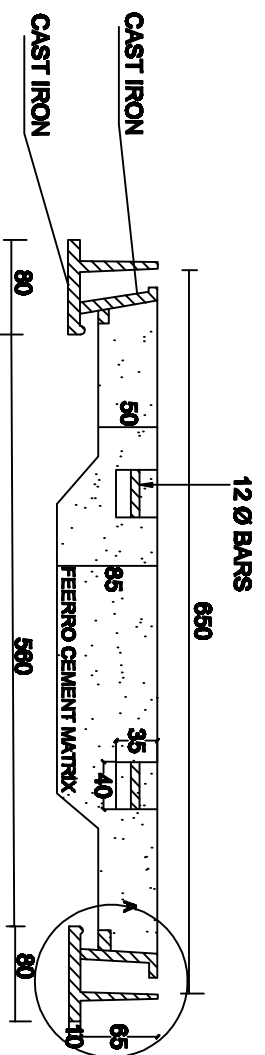
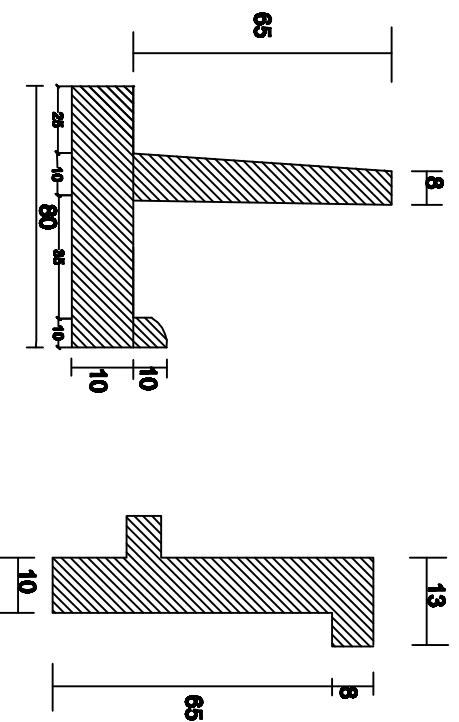


PLAN



SECTION AT X-Y

FERRO CEMENT MAN HOLE COVER



DETAILS AT SECTION -A

**NOTES FOR M. H. COVER**

1. ALL DIMENSIONS ARE IN MM.
2. ALL RAINFORCEMENT BARS TO BE RIBBED TOR STEEL CONFIRMING TO IS : 1786.
3. SHOWS THE DIRECTIONS .
4. EXPOSED PORTION OF C.I. OR STEEL SHALL BE PAINTED WITH COALTAR EXOPY PAINT .
5. BOTTOM OF THE COVER SHALL BE PAINTED WITH COALTARY EPOXY .
6. COVERS SHALL WITH STAND THE TEST LOAD AS PER CI MANHOLE COVER IS:1726 | TESTING OF COVERS SHALL BE DONE ON CENTRE POINT ON AN AREA OF 100MM DIA FOR 5MT UNFRACTURE LOAD AND ULTIMATE LOAD OF 15M.T.
7. FINISHING OF OF CASTING OF COVER AND FRAME RING SHALL BE DONE BY SAND BLASTING .
8. MINIMUM WEIGHT OF C.I. RING SHALL BE 22.5KG AND MINIMUM WEIGHT OF C.I. RING PART OF COVER SHALL BE 13.2 KG.
9. LIFTING CUP SHALL BE OF MIN. 4MM THICK M.S. PLATE, DIA OF LIFTING BAR SHALL BE 12 MM

**FOR TENDER PURPOSE ONLY**

<p><u>CLIENT</u>  <b>Municipal Commissioner Karnal</b>  <b>Directorate of Urban Local Bodies Panchakula</b>  <b>Government of Haryana</b></p>	
<p><u>THROUGH</u>  <b>Executive Engineer</b>  <b>Municipal Corporation Karnal</b></p>	
<p><u>PROJECT</u>  <b>Construction of Sewerage System In Deficit</b>  <b>Area of Karnal Under AMRUT</b></p>	
<p><u>DRG. TITLE :-</u>  <b>Type Design For Ferro Cement Manhole Covers</b></p>	
<p>SCALE :- N.T.S.</p>	<p>DATE :- 18/2/2017</p>
<p>DRG NO:— DULB/MC/AMRUT/Karnal/SEW-11A</p>	